

Sidexis 4: Efficient and versatile!

Two decades of experience in x-ray software, innovative ideas, and the proven Dentsply Sirona quality combined into one product: Sidexis 4.

Integrated workflows

Sidexis 4 can easily be integrated into your practice and is intuitive to operate without extensive training. Moreover, you are prepared for the future: As a new platform, Sidexis 4 also offers you upgrade options that go beyond just x-rays.

Modern, intuitive design

Sidexis 4 offers a completely new and modern look. And beneath the exterior, the new software also impresses users with the intuitive operating philosophy and clearly structured design. The new Timeline also gives you a clear overview of your patients' diagnosis and treatment history.

2D/3D Seamless

Sidexis 4 allows you to view 2D and 3D data at the same time and to display them next to each other without switching between the programs. This saves you time and the cross comparisons give you a reliable basis when making diagnoses and carrying out treatments.



PC requirements*

Server PC	Minimum requirements	Recommended requirements
Operating system	<ul style="list-style-type: none"> Windows Server 2008 R2 (64bit) Windows Server 2012 R2 (64bit) Windows 7 Pro SP1 (64bit) Windows 8.1 Pro (64bit) Windows 10 Pro (64bit)* *Version 1607, Build: 14393.693	<ul style="list-style-type: none"> Windows Server 2008 R2 (64 bit) Windows Server 2012 R2 (64 bit)
RAM	≥ 4 GB	≥ 8 GB
CPU	≥ 2 GHz DualCore	≥ 2.3 GHz QuadCore processor with 64 bit (x64)
Hard Drive	> 675 GB	> 1 TB
During operation it must be ensured that there is always sufficient hard disk space available.		

Work station PC	min. req. for 2D station	min. req. for 3D station
Operating system	<ul style="list-style-type: none"> Windows 7 Pro SP1 (32 o. 64bit) Windows 8.1 Pro (64bit) Windows 10 Pro (64bit)* *Version 1607, Build: 14393.693	<ul style="list-style-type: none"> Windows 7 Professional, Ultimate (64 bit), also under Bootcamp; Windows 8 Pro (64 bit) Windows 8.1 Pro (64 bit)
RAM	≥ 4 GB	≥ 8 GB
CPU	≥ 2 GHz DualCore	≥ 2.3 GHz QuadCore processor with 64 bit (x64)
Graphics card**	≥ 512 MB	≥ 1 GB
DirectX	DirectX 9.0c	DirectX 10 with WDDM 1.0 or higher driver
Hard Drive	≥ 5 GB	≥ 5 GB

* More information at www.sirona.com/sidexis4-system_requirements
System requirements of the hardware used may vary.
** For the interaction with the 3D-rendered volume to be reliable and „smooth“, graphics cards with at least the following Passmark GPU benchmark values are recommended: NVIDIA: Passmark > 1000; AMD: Passmark > 1500; Onboard: > 540

Dentsply Sirona
Sirona Dental Systems GmbH
Fabrikstraße 31, 64625 Bensheim, Germany
dentsplysirona.com

Procedural Solutions

Preventive
Restorative
Orthodontics
Endodontics
Implants
Prosthetics

Enabling Technologies

CAD/CAM
Imaging
Treatment Centers
Instruments

THE DENTAL
SOLUTIONS
COMPANY™

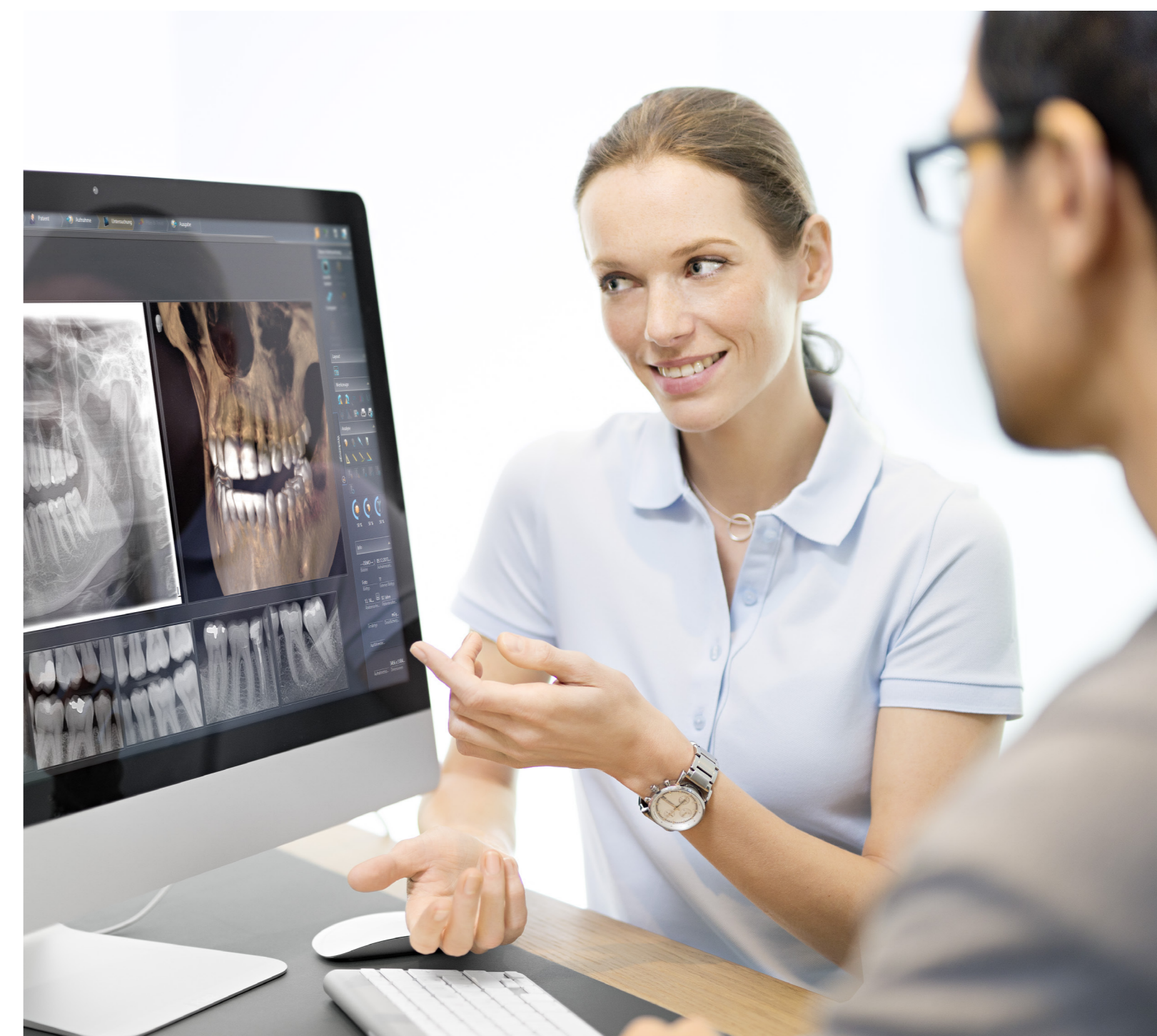


THE DENTAL
SOLUTIONS
COMPANY™



Sidexis 4 – x-ray software The new gold standard

dentsplysirona.com



Subject to technical changes and errors in the text. Order No. A91100-M47-C072-01-7600. Printed in Germany. Dispo No. 04602_ID OE W15 WS 0217V0

Optimum workflow with a clear structure

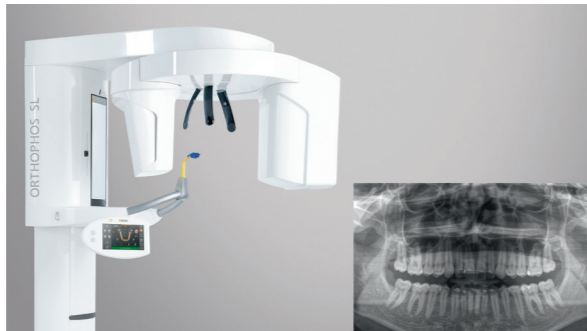
Sidexis 4 is the software for clear diagnoses. It efficiently structures your workflow in its modern and intuitive design and serves as a basis for further planning and diagnosis. This means you have everything you need at a glance.

Scan

For intraoral, 2D or 3D scans, or intraoral camera images, with Sidexis 4 you are prepared for every situation. The software controls your x-ray unit within the Dentsply Sirona workflow and the images are assigned directly to the respective patient file. With the quick and easy import function, also for 3rd party CBCT data, practice work with referrals speeds up significantly.



Xios XG Supreme



Orthophos SL



Galileos

Scan

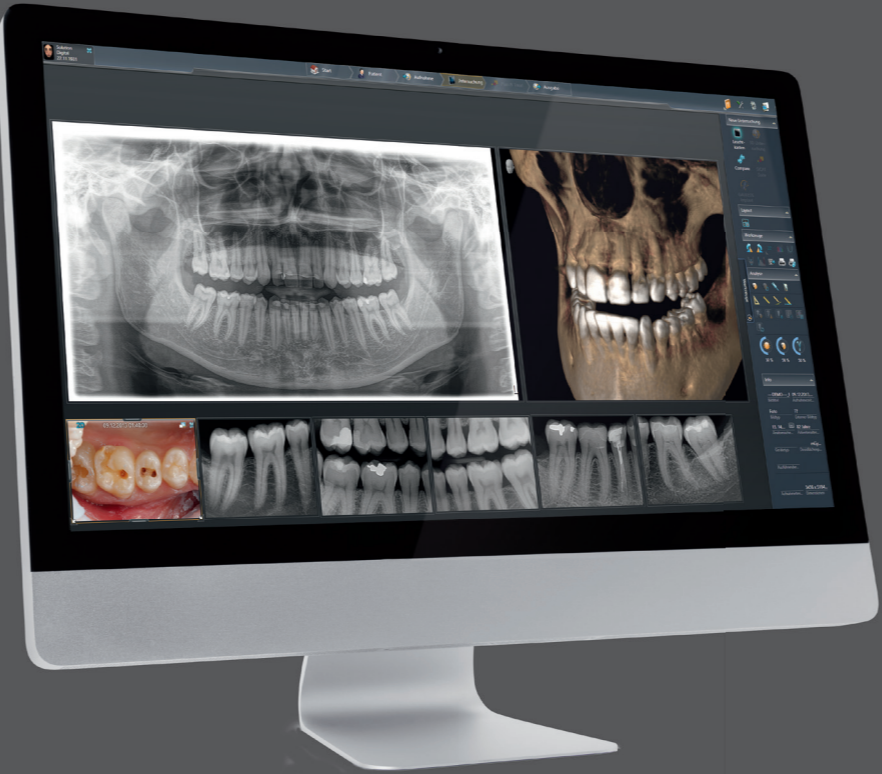
Sidexis 4: the ideal solution

All image data at a glance - the Sidexis 4 principle.



3D examination

Timeline



Diagnosis

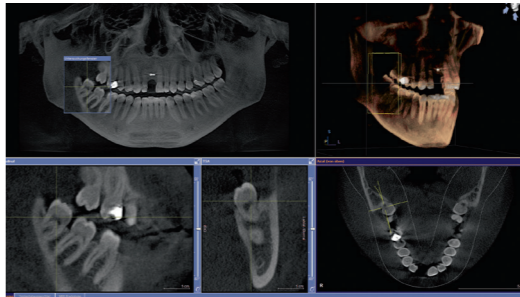
Once you have used the new, well-planned diagnosis functions of Sidexis 4, you won't want to be without it. The Timeline function shows you the visual patient history in chronological order, and using the Drag & Drop function, you can

easily select the images that you require for your diagnosis. These are then shown together in a light box, regardless of whether they are 2D, 3D, or intraoral. For the best possible comparability, 3D can also be used interactively in this view.

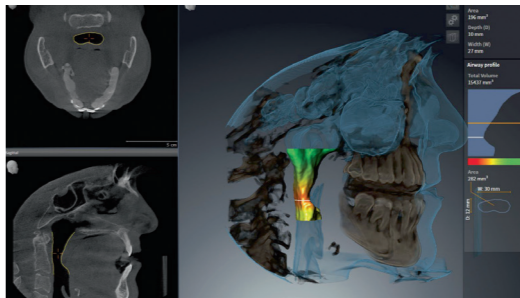
Diagnosis

Planning

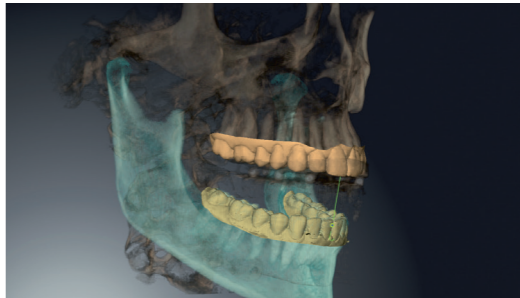
When you have finished your diagnosis, Sidexis 4 offers you a variety of solutions that are directly linked with the software. Whether sleep apnea, implants, or malfunctions, the SICAT software package includes solutions for these problems and many others. Use these in Sidexis 4 and plan your treatment reliably and quickly.



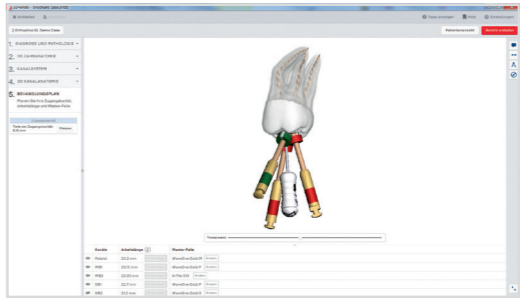
Galileos Implant



SICAT Air



SICAT Function

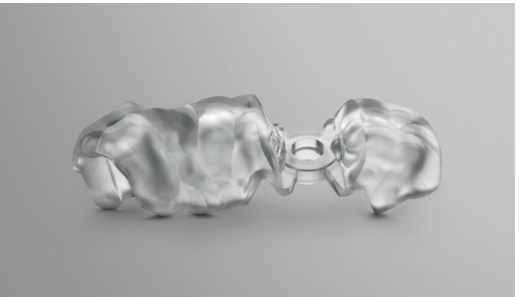


3D Endo

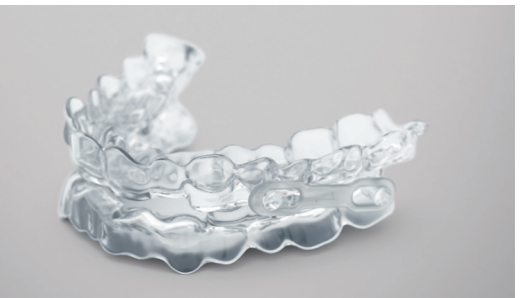
Planning

Treatment

More work remains in your practice. The entire package of Sidexis 4 and SICAT allows you to offer your patients a wide range of solutions - without the need to refer your patient elsewhere. Your patients benefit from fewer visits to the dentist and you benefit from the complete added value chain in the practice.



CEREC Guide 2



SICAT Optisleep therapeutic appliance



SICAT Optimotion therapeutic appliance



Endodontic files

Treatment