



CERASMARTTM

UNIVERSAL

./GC./

INTRODUCING CERASMART UNIVERSAL



THE FIRST FORCE ABSORBING FLEXIBLE NANO CERAMIC



CERASMART IS A REVOLUTIONARY BLOCK. IT COMBINES EXCEPTIONAL STRENGTH AND UNPARALLELED AESTHETICS. BEST OF ALL, IT VIRTUALLY WILL NOT CHIP, HAS A FASTER MILLING TIME, AND IS THE EASIEST MATERIAL TO FINISH.

With a revolutionary Flexible Nano Ceramic Matrix structure, **CERASMART** provides unsurpassed physical properties and impact dispersion due to the fully homogeneous and evenly distributed nano ceramic network.

CERASMART is a unique dental material that combines the best characteristics of a high strength ceramic and a composite. In addition to the highest degree of flexibility, strength and breaking energy, this innovative hybrid nano ceramic helps ensure the best marginal integrity and high strength after bonding.

As a result, **CERASMART** is perfectly suited for posterior, anterior, inlay, onlay, and implant restorations and also enables minimum tooth reduction for minimally-invasive restorations.

The superior reliability of **CERASMART**, as well as its

unmatched aesthetics, milling accuracy, fastest mill time, and self polishing properties are also excellent features.

Finally, this tooth-colored, naturally opalescent nano ceramic material offers properties that are almost identical to those of natural teeth, ensuring your patients the most innovative restoration on the market.



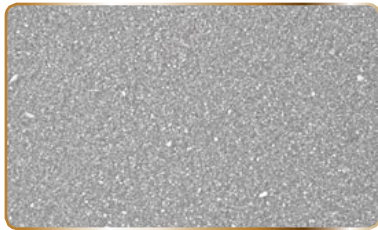
Restorations and Dentistry courtesy of Dr. Gumpei Koike.

FLEXIBLE NANO CERAMICS

Only CERAS**SMART** consists of a flexible nano ceramic matrix with an even distribution of nano ceramic. This specially designed nano ceramic matrix makes it an ideal high strength and force absorbing restoration for all indications, especially implant supported crowns.

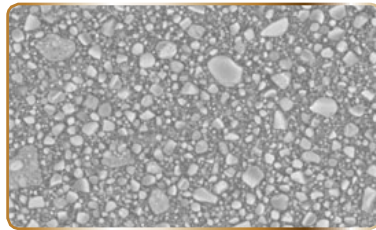
CERAS**SMART**

(Flexible Nano Ceramics)



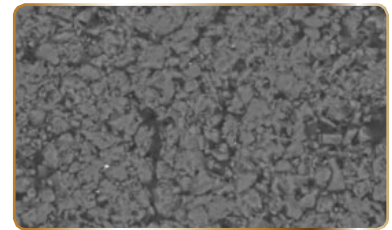
LAVA Ultimate[†]

(Resin Nano Ceramics)



VITA Enamic[†]

(Hybrid Ceramics)



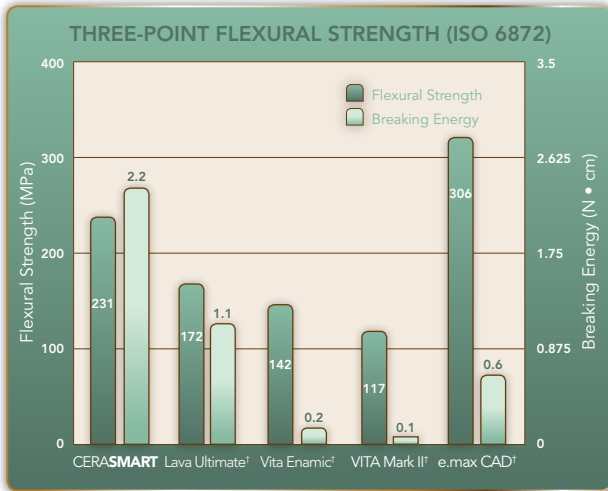
FIRST IN CLASS FOR INTRA-ORAL PROPERTIES

- Flexible, tough and fracture resistant
- Retains gloss over time and is self polishing
- Natural opalescence
- Physical properties of natural enamel
- Easy to polish
- High radiopacity
- Highly wear resistant

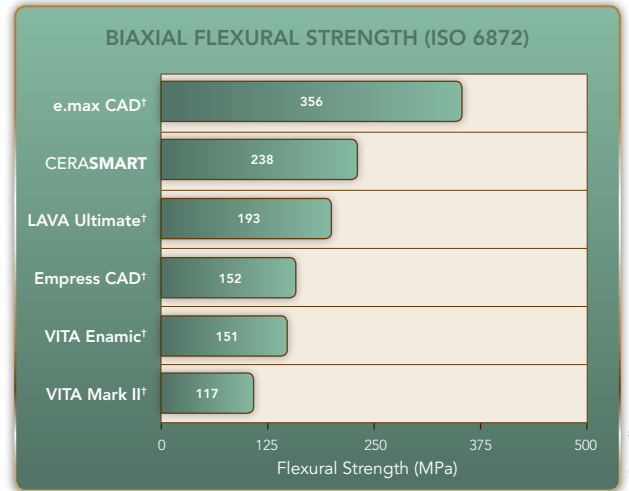
FIRST IN CLASS FOR FABRICATION PROPERTIES

- Mills quicker
- Virtually no chipping
- No need for sintering/crystallization firing
- Repairable in the mouth
- Very gentle on milling burs

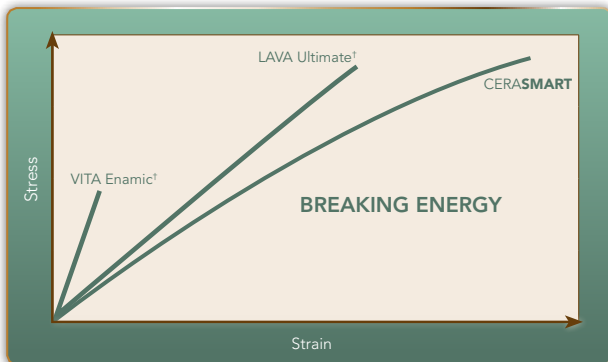
PHYSICAL PROPERTIES



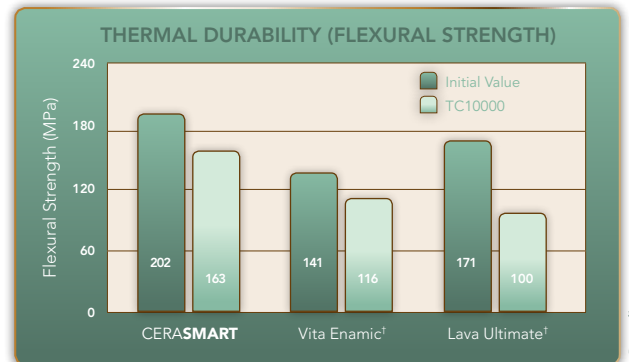
CERASmart showed second higher strength, but the best breaking energy. That means CERASmart was a virtually fracture-proof material.



The flexural strength of ceramics are often evaluated by a biaxial flexure test. According to this test, CERASmart showed higher than any other material besides e.max CAD.



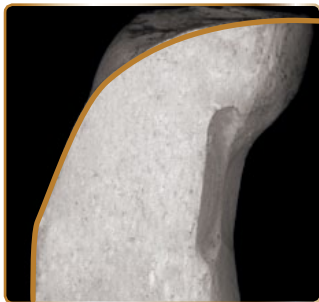
The graph above is used to explain breaking energy. Thanks to its flexibility, CERASmart, which has a high breaking energy, is not easily broken; even under heavy pressure.



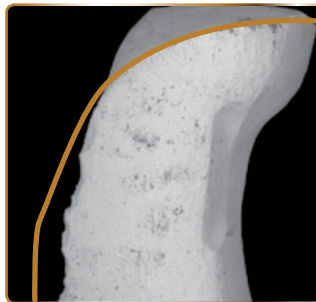
Thermal durability of the blocks (5-55°C). All of the blocks decrease in flexural strength, except CERASmart. It keeps the strength of 160 MPa/TC1000. Lava Ultimate drops down to under 100MPa/TC1000

UNSURPASSED MARGINAL INTEGRITY

CERASMART



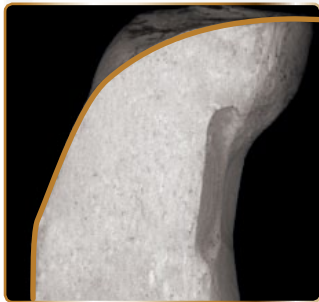
VITA MARK II Block†



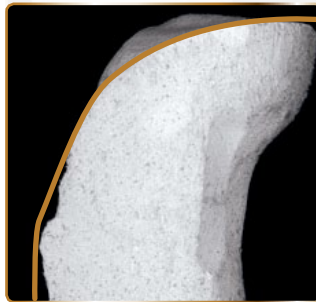
e.max CAD†



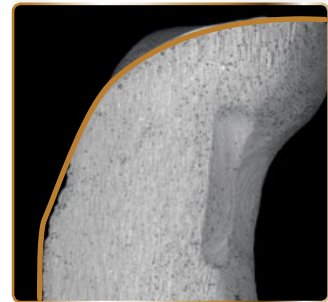
CERASMART



VITA ENAMIC†



LAVA ULTIMATE†

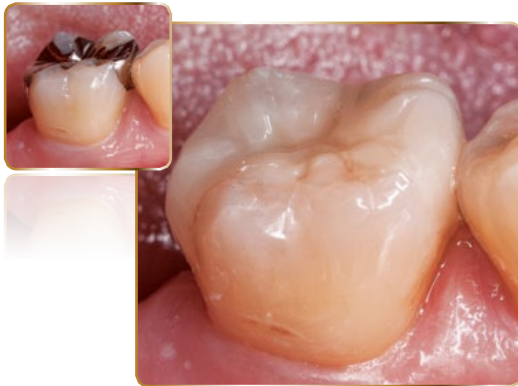


CERASMART recreated accurate designed margins without chipping.

INDICATIONS

- Inlays
- Onlays
- Crowns
- Veneers
- Implant supported crowns

CLINICAL IMAGES



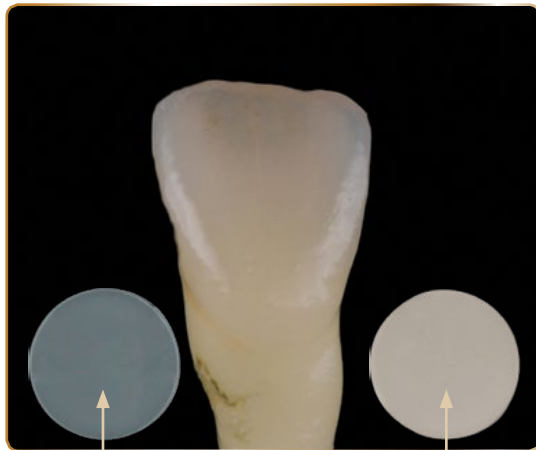
Restorations and Dentistry courtesy of Dr. Gumpei Koike.



Restorations courtesy of Dr. Rich Rosenblatt.

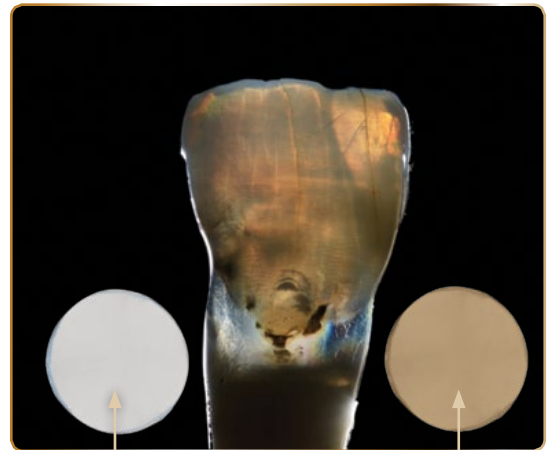
NATURAL OPALESCENCE

CERASMART is the only material of its type to offer such natural tooth-like properties. Notice the enamel-like qualities and natural opalescence. This is only achieved with new Nano Ceramic Matrix.



TRADITIONAL COMPOSITE

CERASMART



TRADITIONAL COMPOSITE

CERASMART

Photography courtesy of Joshua Polansky

NATURAL FLORESCENCE

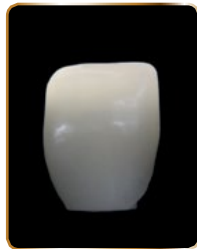


Only CERAS**SMART** has the amazing natural opalescence and florescence of natural teeth.

TRANSMITTED LIGHT



CERAS**SMART**



LAVA Ultimate⁺



Vita Enamic⁺



e.max CAD⁺



Empress Multi⁺

BLACK LIGHT



NATURAL TOOTH



CERAS**SMART**



LAVA Ultimate⁺



Vita Enamic⁺



Vita Mark II⁺



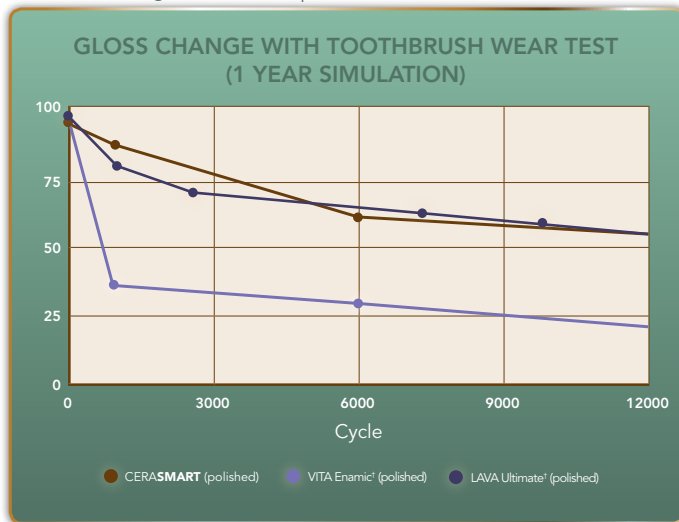
e.max CAD⁺

SUPERIOR GLOSS VALUE

Due to the dynamic proprietary nano ceramic matrix, and its complete homogeneous nature, CERAS**SMART** is a true self-polishing material. Not only does it stay polished longer, but it is proven to gain luster even after being roughened. This unique material is unsurpassed with its high gloss value, unique self polishing capability, and its unmatched aesthetics.

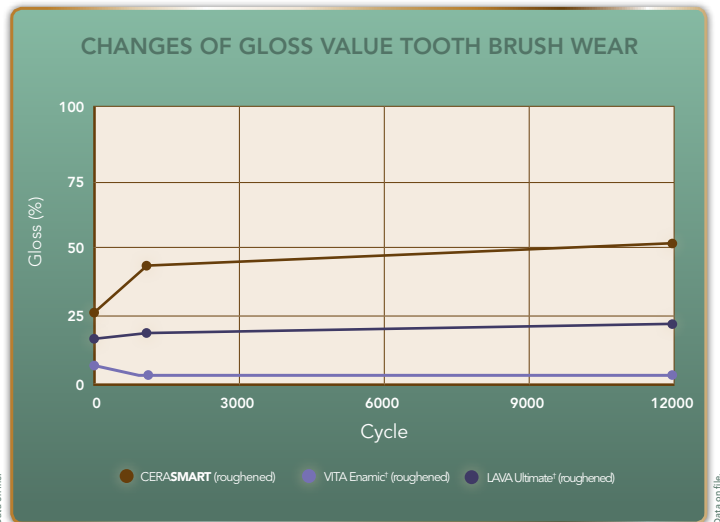
PERMANENT LUSTER

Polished CERAS**SMART** maintained a glossy surface never losing its shine. Roughened CERAS**SMART** showed superior gloss recovery reaching same level as polished surface with toothbrush.



SELF-SHINING PROPERTY

Roughened with #600 paper. CERAS**SMART** shows the dramatic recovery in the gloss value, whereas Lava Ultimate[†] and VITA Enamic[†] does not show much recovery.

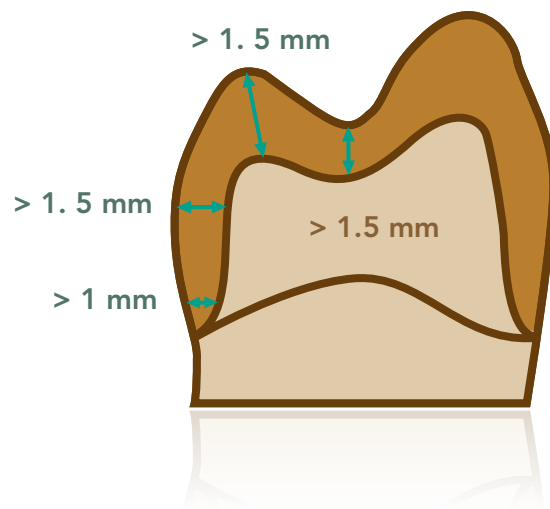


PREPARATION DESIGN



MINIMUM THICKNESS OF THE RESTORATION

- Wall thickness>1.5 mm
- Thickness at margins.....>1.0 mm
- Pit and fissure areas>1.5 mm
- Cusp areas>1.5 mm



MARGIN PREPARATION

- Deep chamfer or rounded shoulder

PREPARATION ANGLE

- Prepare tooth with about 6° taper

INLAYS AND ONLAYS

- All internal edges and angles should be rounded
- Avoid having margins in direct occlusal contact with the opposing tooth



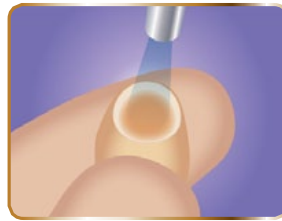
CEMENTATION TECHNIQUE

PRIOR TO USE, CAREFULLY READ THE INSTRUCTIONS FOR USE.

CEMENTATION TECHNIQUE for inlays, onlays, crowns, and bridges.



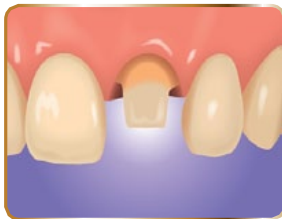
Sandblast with 25-50 μm alumina (0.2MPa). Without sandblasting, treat with hydrofluoric acid (5%) for 60 seconds.



Clean with oil free air syringe or ultrasonic cleaner. Clean further with ethanol (alcohol).



Apply silane coupling agent such as CERAMIC PRIMER II and dry. No bonding agent is required after the application of CERAMIC PRIMER II. For other primers, follow the manufacturer's instructions.



Clean and treat the tooth following the instructions of the manufacturer of the adhesive resin cement.



Follow the procedure described by the manufacturer of the adhesive resin cement.



Finish and polish the margins.

OPTIGLAZE color



For external staining and glazing of your CERAS**MART** restoration, use OPTIGLAZE color. OPTIGLAZE color is a nano filled glazing and staining system specially designed for CERAS**MART**. Because of its specially formulated nano-filler technology, it is extremely wear resistant and made to last. The renowned nano-filler technology gives your restoration a high wear resistance, for long-lasting gloss with a high discoloration resistance.

INDICATIONS

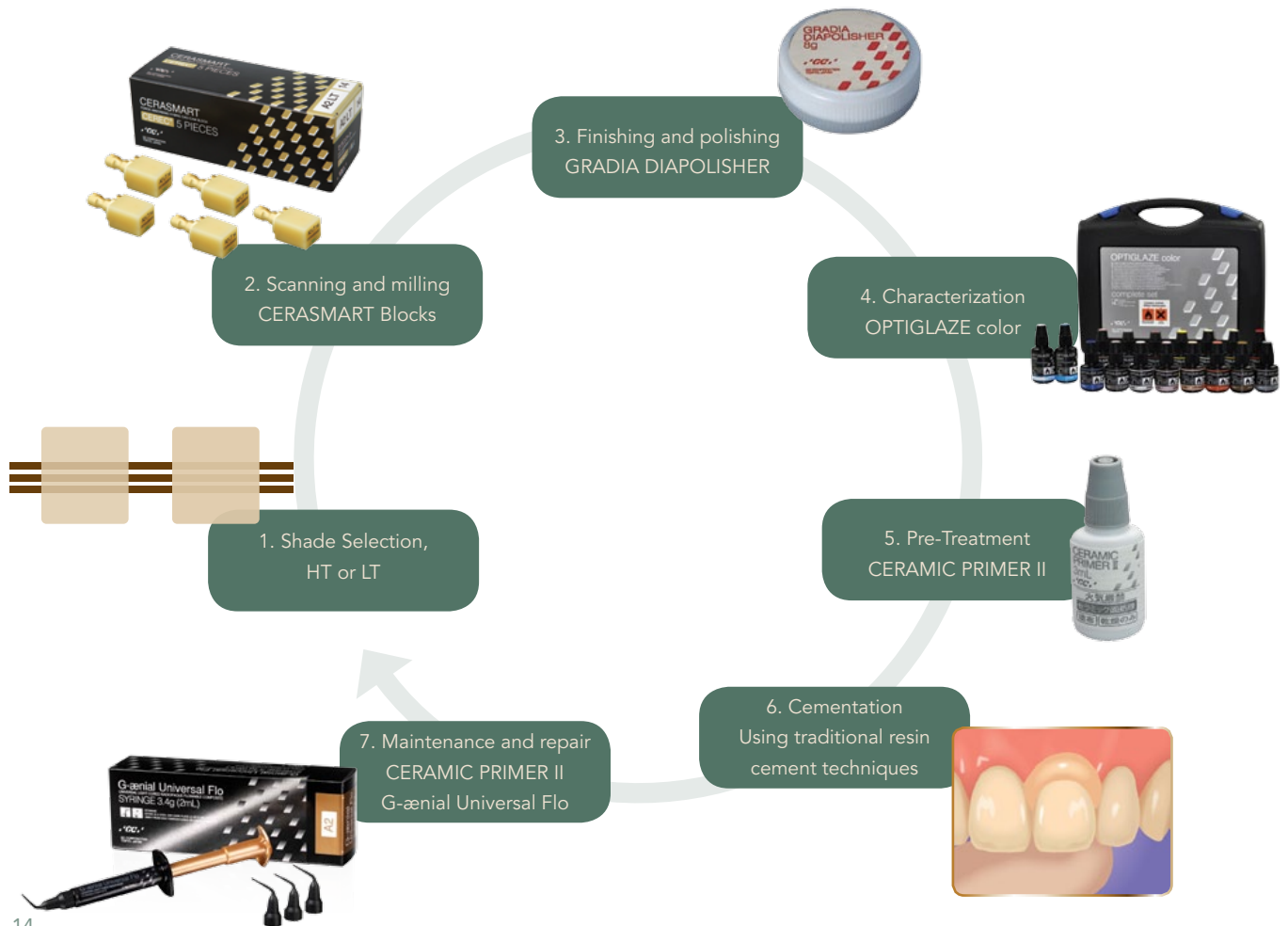
- Final glaze layer
- Adjustment of chroma and enamel characteristics
- Characterization of anterior and posterior restorations



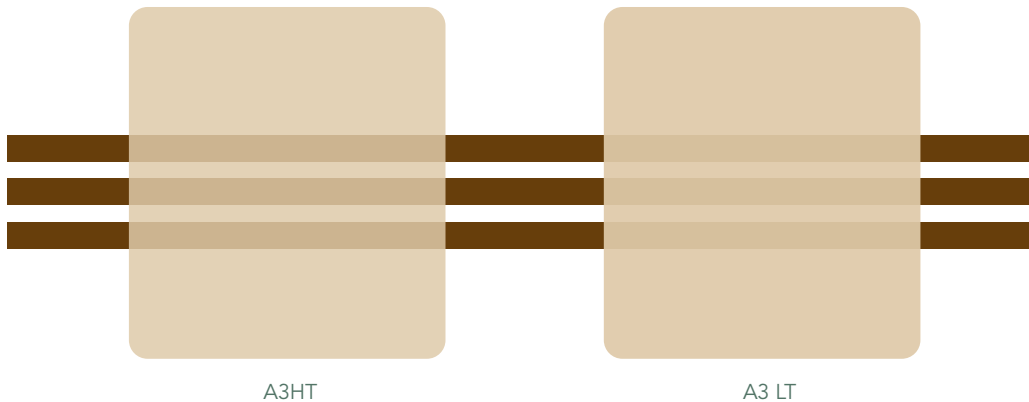
Restorations by Nikos Bellas, MDT.



THE GC CAD/CAM SOLUTION



SHADE SELECTION



A3HT

A3 LT

HIGH TRANSLUCENCY (HT):

- A1 HT, A2 HT, A3 HT, A3.5 HT, B1 HT
- Mainly to replace enamel
- Use in cases of inlays, onlays, veneers, partial and full crowns

SIZES

- Available in 12, 14, and 14L

LOW TRANSLUCENCY (LT):

- A1 LT, A2 LT, A3 LT, A3.5 LT, B1 LT
- For replacement of dentin and enamel structures
- Use to mask discolored preparations, in particular for crowns

ONE BLEACH SHADE (BL)

SKUs



CERASMART UNIVERSAL

SKU	PRODUCT DESCRIPTION	SKU	PRODUCT DESCRIPTION	SKU	PRODUCT DESCRIPTION
008653	CERASMART 12 UNIVERSAL A1 HT 5p	008664	CERASMART 14 UNIVERSAL A1 HT 5p	008675	CERASMART 14L UNIVERSAL A1 HT 5p
008654	CERASMART 12 UNIVERSAL A2 HT 5p	008665	CERASMART 14 UNIVERSAL A2 HT 5p	008676	CERASMART 14L UNIVERSAL A2 HT 5p
008655	CERASMART 12 UNIVERSAL A3 HT 5p	008666	CERASMART 14 UNIVERSAL A3 HT 5p	008677	CERASMART 14L UNIVERSAL A3 HT 5p
008656	CERASMART 12 UNIVERSAL A3.5 HT 5p	008667	CERASMART 14 UNIVERSAL A3.5 HT 5p	008678	CERASMART 14L UNIVERSAL A3.5HT 5p
008657	CERASMART 12 UNIVERSAL B1 HT 5p	008668	CERASMART 14 UNIVERSAL B1 HT 5p	008679	CERASMART 14L UNIVERSAL B1 HT 5p
008658	CERASMART 12 UNIVERSAL A1 LT 5p	008669	CERASMART 14 UNIVERSAL A1 LT 5p	008680	CERASMART 14L UNIVERSAL A1 LT 5p
008659	CERASMART 12 UNIVERSAL A2 LT 5p	008670	CERASMART 14 UNIVERSAL A2 LT 5p	008681	CERASMART 14L UNIVERSAL A2 LT 5p
008660	CERASMART 12 UNIVERSAL A3 LT 5p	008671	CERASMART 14 UNIVERSAL A3 LT 5p	008682	CERASMART 14L UNIVERSAL A3 LT 5p
008661	CERASMART 12 UNIVERSAL A3.5 LT 5p	008672	CERASMART 14 UNIVERSAL A3.5 LT 5p	008683	CERASMART 14L UNIVERSAL A3.5 LT 5p
008662	CERASMART 12 UNIVERSAL B1 LT 5p	008673	CERASMART 14 UNIVERSAL B1 LT 5p	008684	CERASMART 14L UNIVERSAL B1 LT 5p
008663	CERASMART 12 UNIVERSAL Bleach 5p	008674	CERASMART 14 UNIVERSAL Bleach 5p	008685	CERASMART 14L UNIVERSAL Bleach 5p



OPTIGLAZE color			
SKU	PRODUCT DESCRIPTION	SKU	PRODUCT DESCRIPTION
008408	OPTIGLAZE color Complete Set	008417	OPTIGLAZE color Red Brown 2.6mL
008409	OPTIGLAZE color A Plus 2.6mL	008418	OPTIGLAZE color Olive 2.6mL
008410	OPTIGLAZE color B Plus 2.6mL	008419	OPTIGLAZE color Grey 2.6mL
008411	OPTIGLAZE color C Plus 2.6mL	008420	OPTIGLAZE color Blue 2.6mL
008412	OPTIGLAZE color White 2.6mL	008421	OPTIGLAZE color Lavender 2.6mL
008413	OPTIGLAZE color Ivory White 2.6mL	008422	OPTIGLAZE color Pink 2.6mL
008414	OPTIGLAZE color Yellow 2.6mL	008423	OPTIGLAZE color Red 2.6mL
008415	OPTIGLAZE color Orange 2.6mL	008424	OPTIGLAZE color Clear 5mL
008416	OPTIGLAZE color Pink Orange 2.6mL	008425	OPTIGLAZE color Clear HV 5mL



GRADIA DIAPOLISHER POLISHING PASTE	
SKU	PRODUCT DESCRIPTION
001516	GRADIA DIAPOLISHER



CERAMIC PRIMER II	
SKU	PRODUCT DESCRIPTION
008551	CERAMIC PRIMER II 3mL

SKUs



G-ænial™ Universal Flo

SKU	PRODUCT DESCRIPTION	SKU	PRODUCT DESCRIPTION
004202	G-ænial Universal Flo A1 Contains: One syringe and 20 dispensing tips.	004207	G-ænial Universal Flo B1 Contains: One syringe and 20 dispensing tips.
004203	G-ænial Universal Flo A2 Contains: One syringe and 20 dispensing tips.	004208	G-ænial Universal Flo B2 Contains: One syringe and 20 dispensing tips.
004204	G-ænial Universal Flo A3 Contains: One syringe and 20 dispensing tips.	004209	G-ænial Universal Flo B3 Contains: One syringe and 20 dispensing tips.
004205	G-ænial Universal Flo A3.5 Contains: One syringe and 20 dispensing tips.	004213	G-ænial Universal Flo BW Contains: One syringe and 20 dispensing tips.
004206	G-ænial Universal Flo A4 Contains: One syringe and 20 dispensing tips.	004210	G-ænial Universal Flo C3 Contains: One syringe and 20 dispensing tips.
004216	G-ænial Universal Flo AE (Adult Enamel) Contains: One syringe and 20 dispensing tips.	004214	G-ænial Universal Flo CV Contains: One syringe and 20 dispensing tips.
008468	G-ænial Universal Flo AO1 Contains: One syringe and 20 dispensing tips.	004215	G-ænial Universal Flo JE (Junior Enamel) Contains: One syringe and 20 dispensing tips.
004211	G-ænial Universal Flo AO2 Contains: One syringe and 20 dispensing tips.	004635	G-ænial Dispensing Tip II Needle Refill Contains: Quantity of 30 (Metal) dispensing tips for G-ænial Flo and G-ænial Universal Flo.
004212	G-ænial Universal Flo AO3 Contains: One syringe and 20 dispensing tips.	004634	G-ænial Dispensing Tip II Plastic Refill Contains: Quantity of 30 (Plastic) dispensing tips for G-ænial Flo and G-ænial Universal Flo.

NOTES



A large, rounded rectangular box with a gold border, containing seven horizontal lines for writing notes.

TOUCH*of*GENIUS™

