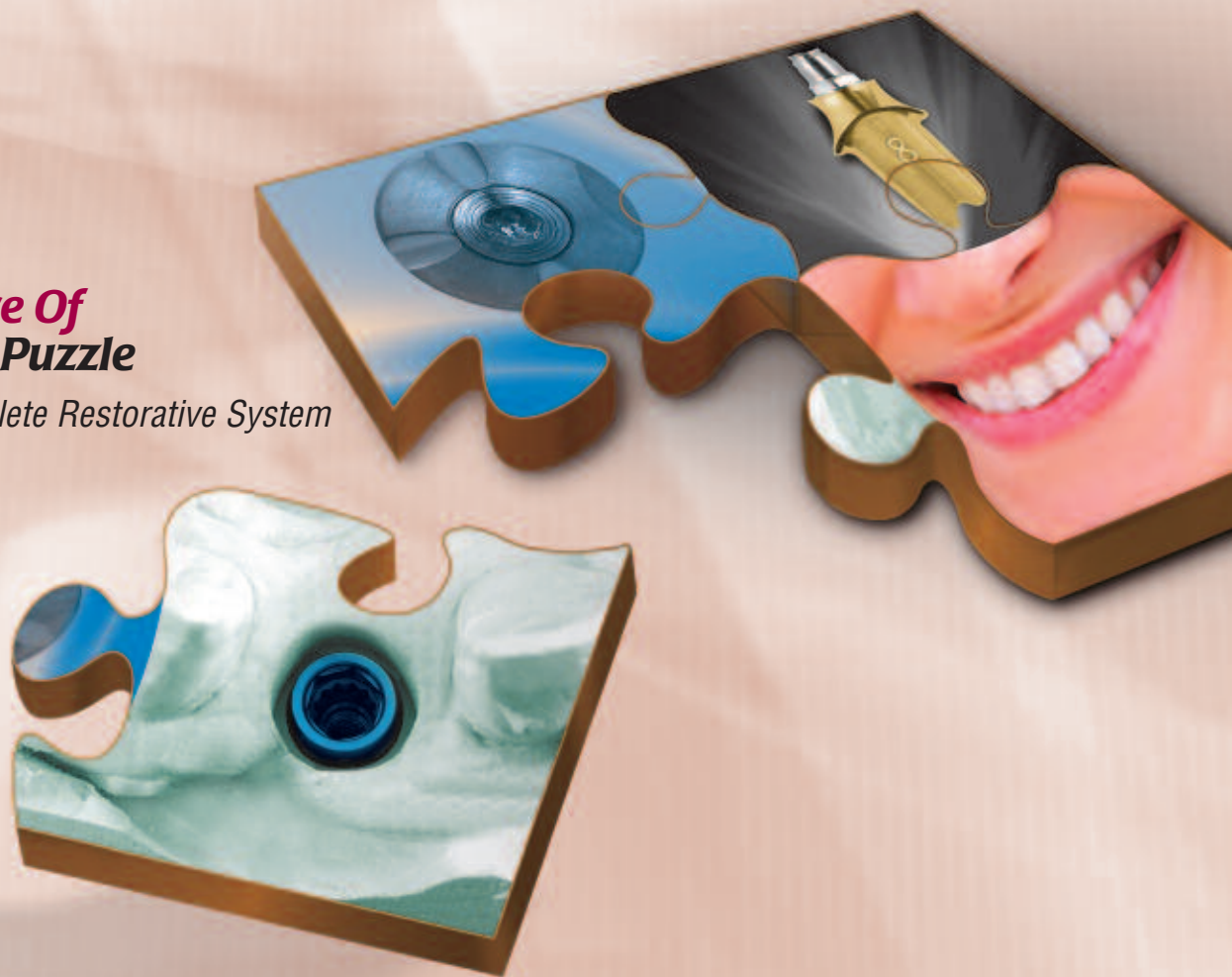


The Final Piece Of The Aesthetic Puzzle

The Encode® Complete Restorative System



- ***Custom Milled CAD/CAM Abutments Are Anatomically Designed To Each Patient Scenario***
- ***Robocast Technology Eliminates Implant-Level Impressions And Associated Component Inventory***
- ***Working Above The Gingiva Helps To Preserve Soft Tissue***



Titanium Nitride

Titanium

Zirconium*

*Not Yet Commercially Available For Sale

The Puzzle Is Now Complete

Meeting aesthetic demands and increasing productivity can be challenging for clinicians. BIOMET 3i now offers a new solution to achieve both.

The BIOMET 3i Encode® Complete Restorative System delivers a patient specific abutment with the margin height and natural emergence contours appropriate to meet the needs of the individual case. The procedure has been simplified due to the technology developed at BIOMET 3i.

No Impression Copings Needed

With Encode Complete, all that is needed for you to receive a patient specific abutment and final restoration is:

- An Impression Of The Encode Healing Abutment And The Opposing Arch
- A Bite Registration
- Shade Selection

Codes embedded on the occlusal surface of the Encode Healing Abutment communicate the implant depth, hex-orientation, platform diameter and interface (Certain® Internal Connection or External Connection).



Maintenance Of Soft Tissue

Because there is no need to remove a healing abutment and seat an impression coping for an implant level impression, soft tissue is spared from the unnecessary trauma of traditional techniques. As a result, soft tissue levels may be preserved and bone remodeling potentially minimized.

Custom Designed With Precision

The result is an anatomically designed final Encode Abutment. Margin, contour, taper and emergence profile are custom crafted by BIOMET 3i Master Dental Technicians to your specifications with consideration to the surrounding gingival architecture and dental structures.



Titanium Nitride

Titanium

Zirconium*

With Encode Complete, the clinician, the laboratory and BIOMET 3i come together to provide the patient with a custom aesthetic restoration.

A Custom Fit

The following Clinical Case Presentation demonstrates a 54-year-old female patient who presented with a failed fixed partial denture supported by teeth Nos. 11 and 13.

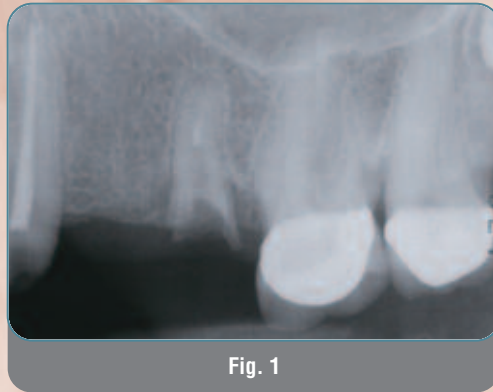


Fig. 1

Tooth No. 13 (maxillary left second bicuspid) was fractured and deemed non-restorable.

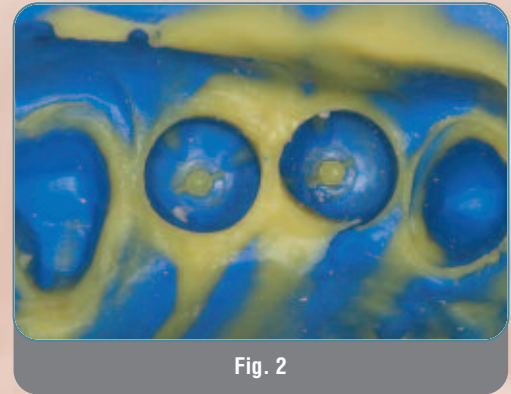


Fig. 2

An impression was made of the Encode® Healing Abutments and natural tooth preparations.

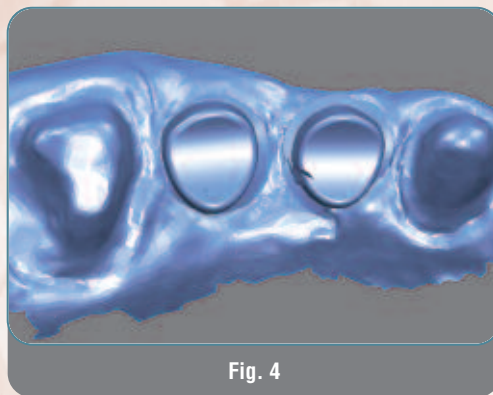


Fig. 4

After scanning the casts, the abutments were designed virtually.

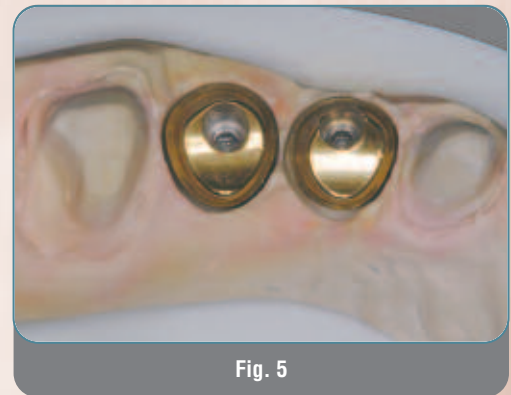
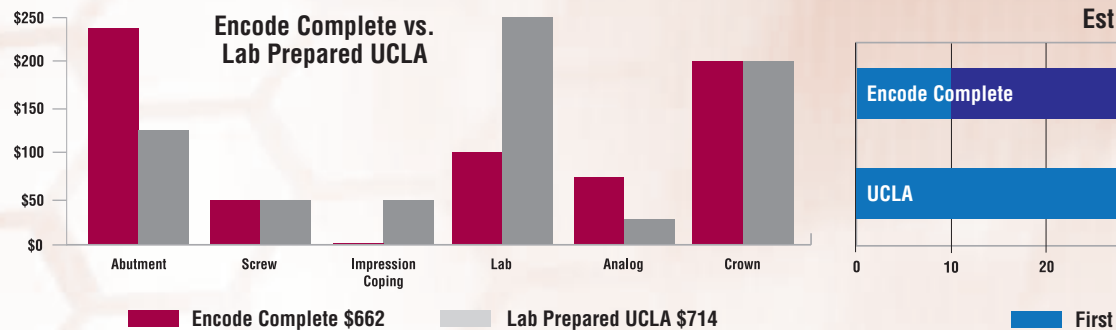


Fig. 5

Implant analogs were placed into the cast using Robocast Technology allowing the definitive Encode Abutments to be placed on the master cast for fabrication of the definitive restorations by the laboratory.

Time And Cost Analysis: Encode Complete



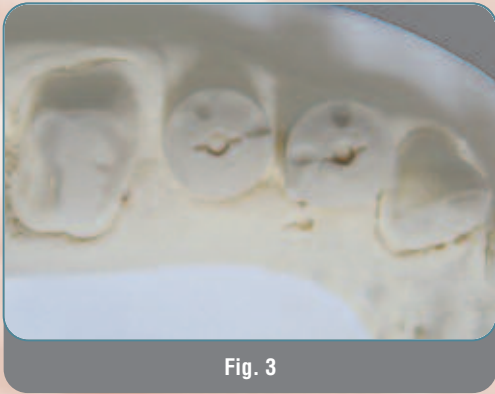


Fig. 3

The impression of the Encode® Healing Abutments was poured using a die stone for fabrication of a master cast. The casts were mounted on the recommended articulator using the bite registration. The work order was completed and the casts were sent to BIOMET 3i for fabrication of definitive Encode Abutments.

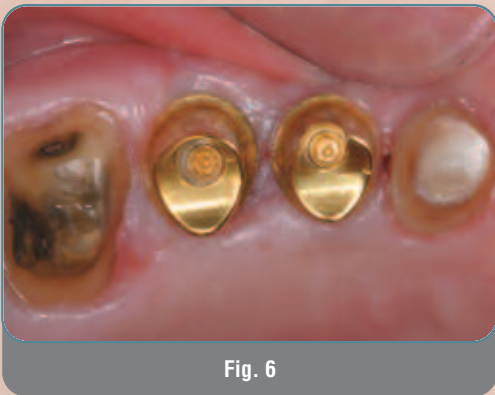


Fig. 6

The titanium-nitride coated definitive Encode Abutments were seated into the internal interfaces of the implants with audible and tactile clicks, which ensured completed seating. The abutments were secured with Gold-Tite® Abutment Screws.



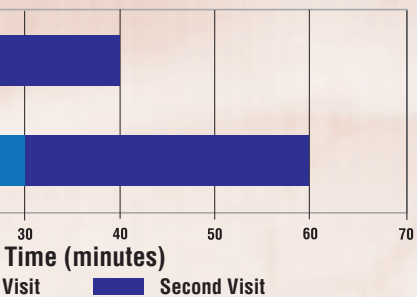
Fig. 7

The definitive restorations were cemented and the patient was dismissed with oral hygiene instructions.

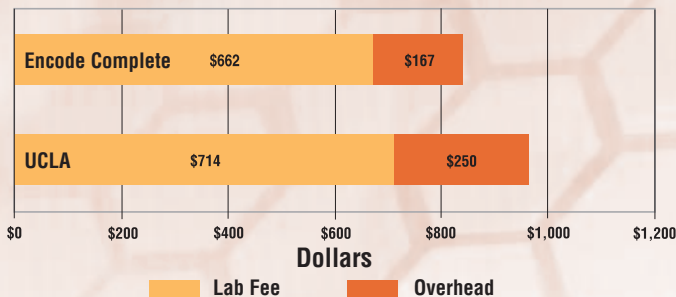
Photographs Courtesy Of:
Dr. Christopher D. Ramsey
Jupiter, FL

Restorative System vs. UCLA Abutment

Estimated Chairtime



Total Estimated Cost**



** The information and cost projections listed are based upon the experiences of George Priest, DMD at a rate of \$250 an hour. The information obtained and costs experienced by other dentists may vary depending on individual experiences.



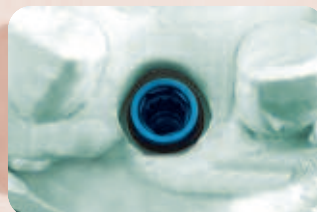
Precision Technology For Aesthetic Results

The newest BIOMET 3i Innovation includes robotic placement of implant analogs into the master cast in a process called Robocast Technology.



Robocast Technology eliminates the need for an implant level impression, which simplifies the procedure for more efficient use of valuable chairtime.

ARCHITECH PSR® Dental Technicians design the patient specific final abutment with appropriate margin height and natural emergence contours, according to the laboratory and clinician specifications. During the milling process, the virtual design data is sent to the Robocast Center for analog placement in the original Encode® Cast.



The result is an implant level master cast called Robocast, which the dental laboratory uses to fabricate the final restoration.

Encode® Healing Abutment Ordering Information

Ask Your Surgeon
To Place Encode
Healing Abutments

To Find Your
Final Piece To The
Aesthetic Puzzle, Call
Your BIOMET 3i
Representative Today!

3.4mm Seating Surface

Emergence Profile	Collar Height	Certain® Item Number	External Hex Item Number
3.8mm	3.0mm	IEHA343	EHA343
3.8mm	4.0mm	IEHA344	EHA344
3.8mm	6.0mm	IEHA346	EHA346
3.8mm	8.0mm	IEHA348	EHA348
5.0mm	3.0mm	IEHA353	EHA353
5.0mm	4.0mm	IEHA354	EHA354
5.0mm	6.0mm	IEHA356	EHA356
5.0mm	8.0mm	IEHA358	EHA358

4.1mm Seating Surface

Emergence Profile	Collar Height	Certain Item Number	External Hex Item Number
4.1mm	3.0mm	IEHA443	EHA443
4.1mm	4.0mm	IEHA444	EHA444
4.1mm	6.0mm	IEHA446	EHA446
4.1mm	8.0mm	IEHA448	EHA448
5.0mm	3.0mm	IEHA453	EHA453
5.0mm	4.0mm	IEHA454	EHA454
5.0mm	6.0mm	IEHA456	EHA456
5.0mm	8.0mm	IEHA458	EHA458
6.0mm	3.0mm	IEHA463	EHA463
6.0mm	4.0mm	IEHA464	EHA464
6.0mm	6.0mm	IEHA466	EHA466
6.0mm	8.0mm	IEHA468	EHA468
7.5mm	3.0mm	IEHA473	EHA473
7.5mm	4.0mm	IEHA474	EHA474
7.5mm	6.0mm	IEHA476	EHA476
7.5mm	8.0mm	IEHA478	EHA478

5.0mm Seating Surface

Emergence Profile	Collar Height	Certain Item Number	External Hex Item Number
5.0mm	3.0mm	IEHA553	EHA553
5.0mm	4.0mm	IEHA554	EHA554
5.0mm	6.0mm	IEHA556	EHA556
5.0mm	8.0mm	IEHA558	EHA558
6.0mm	3.0mm	IEHA563	EHA563
6.0mm	4.0mm	IEHA564	EHA564
6.0mm	6.0mm	IEHA566	EHA566
6.0mm	8.0mm	IEHA568	EHA568
7.5mm	3.0mm	IEHA573	EHA573
7.5mm	4.0mm	IEHA574	EHA574
7.5mm	6.0mm	IEHA576	EHA576
7.5mm	8.0mm	IEHA578	EHA578

6.0mm Seating Surface

Emergence Profile	Collar Height	Certain Item Number	External Hex Item Number
6.0mm	3.0mm	IEHA663	EHA663
6.0mm	4.0mm	IEHA664	EHA664
6.0mm	6.0mm	IEHA666	EHA666
6.0mm	8.0mm	IEHA668	EHA668
7.5mm	3.0mm	IEHA673	EHA673
7.5mm	4.0mm	IEHA674	EHA674
7.5mm	6.0mm	IEHA676	EHA676
7.5mm	8.0mm	IEHA678	EHA678



Global Headquarters
4555 Riverside Drive
Palm Beach Gardens, FL 33410
1-800-342-5454
Outside The U.S.: +1-561-776-6700
Fax: +1-561-776-1272
www.biomet3i.com

Sign Up For BIOMET 3i's Electronic Newsletter "BIOMET 3innovations."
Simply Go Online To www.biomet3i.com/signup



Rev A 08/08

ARCHITECH PSR, Certain, Encode and Gold-Tite are registered trademarks of BIOMET 3i LLC. BIOMET is a registered trademark and BIOMET 3i and design are trademarks of BIOMET, Inc. © BIOMET 3i LLC. All rights reserved.

SUBSIDIARIES

AUSTRALIA
Phone: +61-2-9855-4444
Fax: +61-2-9888-9900

AUSTRIA
Phone: +43-(0)6235-200-45
Fax: +43-(0)6235-200-45-9

BELGIUM
Phone: +32-2-5410290
Fax: +32-2-5410291

BRAZIL
Phone: +55-11-5081-4405
Fax: +55-11-5081-7484

CANADA
Phone: +514-956-9843
Fax: +514-956-9844

FRANCE
Phone: +33-1-41054343
Fax: +33-1-41054340

GERMANY
Phone: +49-721-255177-10
Fax: +49-721-255177-73

IRELAND
Phone: +353-1-800-552-752
Fax: +44-1628-820182

MEXICO
Phone: +52-55-2282-0120
Fax: +52-55-2282-0120 ext. 20

THE NETHERLANDS
Phone: +31-(0)78-629-2800
Fax: +31-(0)78-629-2801

NEW ZEALAND
Phone: +64-508-122-221
Fax: +64-508-133-331

NORDIC REGION
Phone: +46-40-17-6090
Fax: +46-40-17-6099

PORTUGAL
Phone: +351-21-000-1647
Fax: +351-21-000-1675

SPAIN
Phone: +34-93-470-59-50
Fax: +34-93-372-11-25

SWITZERLAND
Phone: +41-(0)44-200-76-00
Fax: +41-(0)44-200-76-01

TURKEY
Phone: +90-212-573-6916
Fax: +90-212-662-7635

U.K.
Phone: +44-800-652-1233
Fax: +44-1628-820182

DISTRIBUTORS

ARGENTINA
Dentalmax, SA
Phone: +541-1482-71001
Fax: +541-1482-67373

CHILE
Cybel, SA
Phone: +56-2-2321883
Fax: +56-2-2330176

CHINA
Atek Inc.
Phone: +86-21-6329-1265
Fax: +86-21-6329-1620

COLOMBIA
3i Colombia
Phone: +571-612-9362
Fax: +571-620-6412

COSTA RICA
Implantec S.A.
Phone: +506-234-9043
Fax: +506-224-7620

EL SALVADOR
Dentimer SA de CV
Phone: +503-263-6350
Fax: +503-263-6676

GREECE
Impladent Dental Implants, LLC
Phone: +30-2310-501-651
Fax: +30-2310-522-417

ISRAEL
H.A. Systems
Phone: +972-3-6138777
Fax: +972-3-6138778

HONG KONG
Ositek Inc., Ltd.
Phone: +852-8121-6601
Fax: +852-3747-3754

ITALY
Biomax, srl
Phone: +39-0444-913410
Fax: +39-0444-913695

JAPAN
Implant Innovations Japan
Phone: +81-66-868-3012
Fax: +81-66-868-2444

KOREA
Jungsan 3i Corp.
Phone: +82-2-516-1808
Fax: +82-2-514-9434

LEBANON
3i MENA s.a.l.
Middle East And North Africa
Phone: +961-1-694000
Fax: +961-1-694222

PARAGUAY
Andres H. Arce y Cia SRL
Phone: +595-21-208185
Fax: +595-21-496291

POLAND
Dental Depot
Phone: +48-71-341-3091
Fax: +48-71-343-6560

RUSSIA
Com-Dental
Phone: +7-495-797-6686
Fax: +7-499-242-9567

SINGAPORE
Asia Implant Support & Services
Phone: +65-6223-2229
Fax: +65-6220-3538

SOUTH AFRICA
Selective Surgical CC
Phone: +27-11-991-7007
Fax: +27-11-672-1391

TAIWAN
Kuo Hwa Dental Suppliers Co., Ltd.
Phone: +886-2-2226-1770
Fax: +886-2-2226-8747

THAILAND
3i (Thailand) Co., LTD.
Phone: +662-252-6685
Fax: +662-252-6686

UKRAINE
Com-Dental
Phone: +38-067-7007667
Fax: +38-044-5017117

URUGUAY
Pro3implant S.R.L.
Phone: +598-2-4034163
Fax: +598-2-4034163